



2019 RESIDENCY OUTCOMES

It was a record year for AUC graduates seeking residency. More than 340 filled residency positions—the largest number in AUC’s recorded history—and 2018-19 graduates achieved a **90% first-time eligible residency attainment rate**, one of our strongest to-date. Our record of success extends beyond our 2019 results. First-time eligible AUC graduates consistently outperform osteopathic and international medical school graduates in the U.S. National Resident Matching Program. They earn residencies at rates comparable to U.S. medical school graduates and join over 6,900 AUC alumni practicing medicine around the world.

349
residency placements

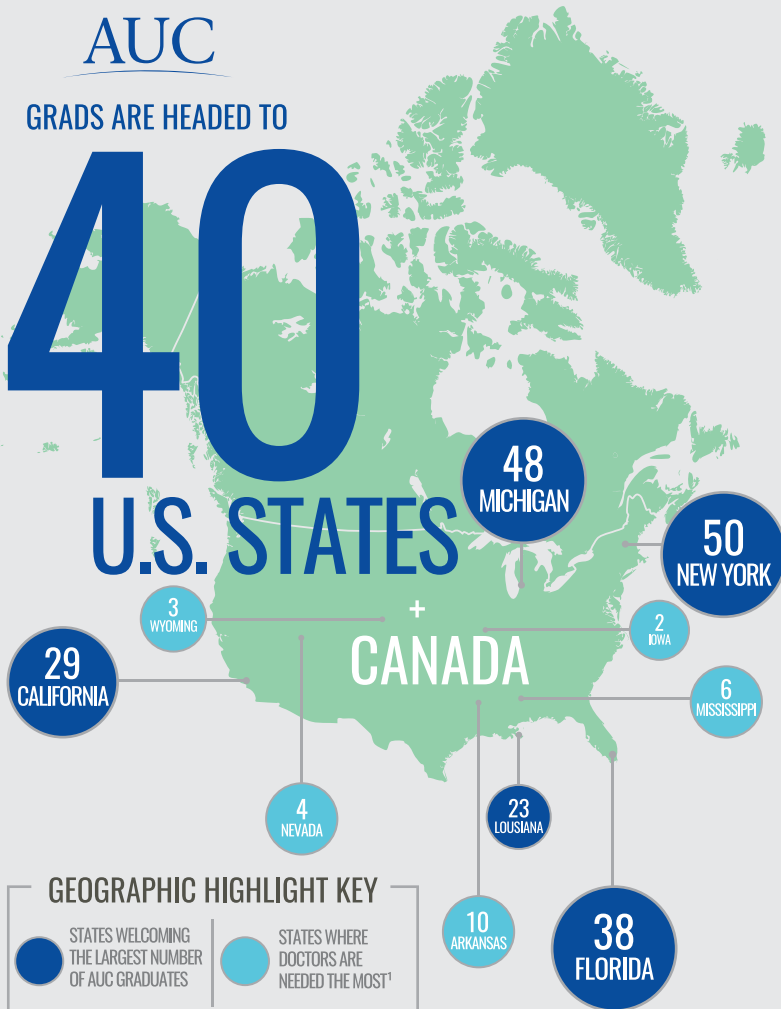
90%

1st time residency attainment rate
for 2018-2019 AUC graduates

18
specialties

GEOGRAPHIC DISTRIBUTION

AUC graduates secured residencies in 40 U.S. states and Canada. They will head to large university-affiliated academic medical centers, rural-based programs, busy urban hospitals, and major regional healthcare systems.



PRIMARY CARE MATCHES

AUC continues to contribute a significant number of primary care physicians to the U.S. healthcare workforce. This year, 73% of AUC graduates entering residency chose primary care.

130
Internal
Medicine

106
Family
Medicine

16
Pediatrics

HIGHLY COMPETITIVE SPECIALTIES²



Anesthesiology



Emergency
Medicine



Obstetrics &
Gynecology



Physical Medicine
& Rehabilitation



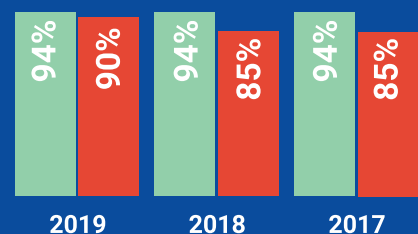
Radiology



General
Surgery

KEEPING PACE WITH U.S. MEDICAL SCHOOLS

PGY1 RESIDENCY ATTAINMENT RATE³



¹2017 State Physician Workforce Data Book. Association of American Medical Colleges.
²Highly competitive specialties are defined by the number of positions offered and the position fill rate.
³AUC’s residency attainment rate is comprised of first-time eligible 2018-19 graduates who matched into a position through the U.S. National Resident Matching Program (NRMP) as well as outside of the Main Match. The U.S. allopathic senior rate represents only those seniors who secured a position through the Main Match.

Anesthesiology

Allegheny General Hospital – PA
Baystate Medical Center – MA*
Cook County Health and Hospital Systems – IL (2)
Grand Strand Regional Medical Center – SC
Indiana University – IN*
Rush University Medical Center – IL
Texas Tech University Health Sciences Center at Lubbock – TX
University of Arkansas at Little Rock – AR
University of Kansas Medical Center – KS
University of New Mexico – NM
University of Texas at Houston – TX
University at Buffalo – NY
University of Toledo – OH

Combined Internal Medicine & Emergency Medicine

Louisiana State University – LA

Combined Internal Medicine & Pediatrics

Louisiana State University Health Science Center - Shreveport – LA
East Carolina University / Vidant Medical Center – NC
Marshfield Clinic – WI
University of Tennessee, Memphis – TN

Emergency Medicine

Arnot Ogden Medical Center – NY
Ascension Macomb-Oakland Hospital – MI (2)
Brandon Regional Hospital – FL
Eisenhower Medical Center – CA
Genesys Regional Medical Center – MI (2)
Henry Ford Allegiance Health – MI
Inspira Medical Center Woodbury – NJ
Louisiana State University Health Science Center - Baton Rouge – LA
NYCOMEC – NY
Wyckoff Heights Medical Center – NY

Family Medicine

Abrazo Health Network – AZ
AMITA Health Adventist Medical Center La Grange – IL
AnMed Health – SC
Arrowhead Regional Medical Center – CA
Ascension St. John Hospital – MI
Aultman Hospital – OH
Aurora Health Care – WI
Aurora St. Luke's Medical Center – WI
Baton Rouge General Medical Center – LA (3)
Baylor Scott & White Medical Center - Template – TX
California Hospital Medical Center – CA
Campbell University - Southeastern Health – NC
Carolinas HealthCare System North East – NC
Central Michigan University – MI
Clinica Sierra Vista – CA
Deaconess Hospital – IN (2)
Drexel University - Hahnemann University Hospital – PA
Eastern Maine Medical Center – ME
Eisenhower Medical Center – CA (2)
Einstein Medical Center – PA
Florida Hospital - AdventHealth Orlando – FL (2)
Florida State University – FL
Genesis Quad Cities Family Medical Center – IA
Henry Ford Allegiance Health – MI
Henry Ford Hospital – MI
HonorHealth Scottsdale Osborn Medical Center – AZ
Houston Methodist – TX (3)
Institute for Family Health – NY (2)
Kaiser Permanente Fontana Medical Center – CA
Kent Hospital – RI
Lynchburg Family Medicine Residency – VA
McLaren Health Care - Flint – MI
Medical College of Wisconsin - Fox Valley – WI
Mercer University / Medical Center of Central Georgia – GA
Mercy Medical Center – CA
Mercy Medical Center Merced – CA
Mercy Medical Center North Iowa – IA
Michigan State University - East Lansing – MI (2)
Mount Carmel Health System – OH
Mountainside Hospital – NJ
Munson Medical Center – MI
Natividad Medical Center – CA
New York Medical College / St. Joseph's Medical Center – NY (2)
Northwell Health / Peconic Bay Medical Center – NY
Oak Hill Hospital – FL
Orange Park Medical Center – FL
Presence Saints Mary and Elizabeth Medical Center – IL
Promedica Regional Health – MI
Southern Illinois University Center for Family Medicine - Quincy – IL
Rapides Regional Medical Center – LA
Riverside Regional Medical Center – VA
Rush-Copley Memorial Hospital – IL (2)
Robert Wood Johnson University Hospital Somerset – NJ (2)
San Joaquin General Hospital – CA
Southern Illinois University – IL
St. Agnes Medical Center – CA (2)
St. Luke's University Hospital - Bethlehem – PA
St. Mary Mercy Livonia Hospital – MI
St. Mary-Corwin Medical Center – CO
St. Vincent Hospital Center – IN
St. Joseph Hospital of Eureka – CA
Summa Health – OH (2)
Tallahassee Memorial Healthcare – FL
University at Buffalo – NY
University of Arkansas at Little Rock – AR (2)
University of Arkansas for Medical Sciences - Fayetteville – AR (2)
University of Arkansas for Medical Sciences - Texarkana – AR
University of Central Florida – FL
University of Kansas Medical Center - Kansas City – KS
University of Minnesota - Lake Cloud – MN
University of North Dakota – ND (2)
University of Vermont Health Network / Champlain Valley Physicians' Hospital – VT
University of Wisconsin - Eau Claire – WI (2)
University of Wyoming, Casper – WY (2)
University of Wyoming, Cheyenne – WY
United Hospital Center – WV
University Hospitals and Clinics – LA (2)
University of Mississippi Medical Center / University Hospital – MS (2)
UP Health System - Marquette – MI (2)
UPMC Altoona Hospital – PA
Western Michigan University - Kalamazoo – MI (2)
Wheeling Hospital – WV
WellStar Atlanta Medical Center – GA

General Surgery

Brandon Regional Hospital – FL
Creighton University / Maricopa Medical Center – AZ
Danbury Hospital – CT
Nassau University Medical Center – NY
St. Joseph's Hospital – WA
University of Kentucky Medical Center - Bowling Green – KY
University of South Florida – FL
UPMC Pinnacle Hospitals – PA

Internal Medicine

Ascension Providence Hospital – MI (4)
Ascension St. John Hospital – MI
Aurora Health Care – WI
Authority Health – MI
Baptist Health – AR
Baton Rouge General Medical Center – LA (7)
Baylor Scott & White Medical Center - Round Rock – TX
Brandon Regional Hospital – FL
BronxCare Health System – NY
Brookdale University Hospital Medical Center – NY (3)
Brookhaven Memorial Hospital – NY
Broward Health Medical Center – FL (2)
Campbell University - Harnett Health – NC
Canton Medical Education Foundation – OH
Citrus Memorial Hospital – FL (2)
Cleveland Clinic Florida – FL – not on DD list
Coliseum Medical Centers – GA
Creighton University / Maricopa Medical Center – AZ (2)
Creighton University School of Medicine / Omaha – NE
Detroit Medical Center – MI (2)
Drexel University - Hahnemann University Hospital – PA
East Carolina University / Vidant Medical Center – NC
Eisenhower Medical Center – CA (2)
Englewood Hospital – NJ
Florida Atlantic University – FL (3)
Florida State University – FL
Henry Ford Hospital – MI (2)
Henry Ford Macomb Hospital – MI (2)
Hurley Medical Center – MI
Jersey City Medical Center – NJ
Kern Medical Center – CA (3)
Larkin Community Hospital – FL
Legacy Good Samaritan Medical Center – OR
Louisiana State University Health Science Center – Shreveport – LA
Magnolia Regional Health Center – MS
McLaren Health Care - Flint – MI
McLaren Health Care - Macomb – MI
Medical Center of Trinity – FL
MedStar Union Memorial Hospital – MD
Memorial Health University Medical Center – GA (2)
Memorial Healthcare System – FL (3)
Mercer University / Medical Center of Central Georgia – GA
Mercy Hospital St. Louis – MO
MercyHealth – IL (2)
Nassau University Medical Center – NY (5)
NewYork-Presbyterian Brooklyn Methodist Hospital – NY (4)
Northeast Georgia Medical Center – GA
Northside Hospital – FL
Northwell Health / Mather Hospital – NY
Northwell Health / Staten Island University Hospital – NY
Norwalk Hospital – CT
NYU Winthrop Hospital – NY (2)
Oak Hill Hospital – FL
Orlando Health – FL
Santa Barbara Cottage Hospital – CA
St. Agnes Medical Center – CA (2)
St. Elizabeth Youngstown Hospital – OH
St. Joseph Mercy Ann Arbor Hospital – MI (2)
St. Joseph's University Medical Center – NJ (3)
St. Luke's University Hospital Bethlehem – PA
Sunrise Health GME Consortium – NV (2)
SUNY Health Science Center at Brooklyn – NY
SUNY Upstate Medical University – NY (2)
Texas Health Presbyterian Hospital Dallas – TX
The Brooklyn Hospital Center – NY (2)
The Christ Hospital – OH (2)
The University of Texas Health Science Center at Tyler – TX
Unity Health – AR
University Hospitals & Clinics – LA (3)
University of California, San Francisco - Fresno – CA (2)
University of Central Florida, Orlando – FL
University of Florida / Shands Hospital – FL
University of Miami /
JFK Medical Center Palm Beach Regional
Graduate Medical Education Consortium – FL
University of Mississippi Medical Center / University Hospital – MS
University of Nebraska Medical Center – NE (2)
University of Nevada, Reno – NV
University of Tennessee, Chattanooga – TN
University of Tennessee, Knoxville – TN (2)
UPMC Mercy Hospital – PA
Virginia Tech Carilion Clinic – VA
Wayne State University – MI (2)
West Suburban Medical Center – IL

Neurology

Dartmouth-Hitchcock Medical Center – NH
Temple University Hospital – PA
University of Kansas Medical Center - Kansas City – KS
University of Missouri Health Care - Columbia – MO
University of Toledo – OH
Virginia Commonwealth University Health Systems – VA*
West Virginia University – WV

Obstetrics & Gynecology

Ascension Providence Hospital – MI
Nassau University Medical Center – NY (2)

Pathology

Louisiana State University Health Science Center - Shreveport – LA
Montefiore Medical Center / Albert Einstein College of Medicine – NY
Penn State Health Milton S. Hershey Medical Center – PA
University of Southern California – CA
University of California, Irvine Medical Center – CA

Pediatrics

Beaumont Hospital - Royal Oak – MI
Broward Health Medical Center – FL (2)
Cooper University Health Care – NJ
Driscoll Children's Hospital – TX
Eastern Virginia Medical School – VA
Marshfield Clinic – WI
Newark Beth Israel Medical Center – NJ (2)
Tucson Hospitals Medical Education Program – AZ
University of Arkansas at Little Rock – AR
University of Kansas Medical Center - Wichita – KS
University at Buffalo – NY
University of Mississippi Medical Center / University Hospital – MS (2)
Valley Children's Healthcare – CA

Physical Medicine & Rehabilitation

Michigan State University, East Lansing – MI

Preliminary Medicine

Conemaugh Memorial Medical Center – PA
Flushing Hospital Medical Center – NY
Nassau University Medical Center – NY
St. Mary's Hospital – CT
SUNY Health Science Center at Brooklyn – NY
Virginia Commonwealth University Health Systems – VA
Northwell Health / Staten Island University Hospital – NY

Preliminary Surgery

Ascension Providence Hospital – MI
Brandon Regional Hospital – FL
BronxCare Health System – NY
Jackson Memorial Hospital – FL
Louisiana State University Health Science Center - Shreveport – LA
Montefiore Medical Center / Albert Einstein College of Medicine – NY
Nassau University Medical Center – NY
St. Agnes Hospital – MD
St. Mary's Hospital – CT
University of Arizona – AZ
University of Connecticut – CT

Primary Medicine

SUNY Health Science Center at Brooklyn – NY
University of Nevada, Reno – NV

Psychiatry

Authority Health – MI
Berkshire Medical Center – MA (2)
Brookdale Hospital Medical Center – NY
Charles R. Drew University – CA
Community Health of South Florida – FL
Detroit Medical Center – MI
Drexel University - Hahnemann University Hospital – PA
Jamaica Hospital – NY
Kaiser Permanente Oakland Medical Center – CA
New Bridge Medical Center – NJ
St. John's Episcopal Hospital – NY (2)
University of Arkansas at Little Rock – AR
University of Central Florida – FL
University of Illinois at Peoria / UnityPoint Health – IL
University of North Dakota – ND

Radiology (Diagnostic)

Beaumont Health - Dearborn – MI*
Detroit Medical Center – MI (2)*
McLaren Health Care - Oakland – MI
McMaster University – ON
Nassau University Medical Center – NY (3)*
Richmond University Medical Center – NY*
Tulane University – LA
University of Arizona at Tucson – AZ*
University of Cincinnati Medical Center – OH*
University of Minnesota – MN

Transitional

Beaumont Health - Dearborn – MI*
Detroit Medical Center – MI (2)*
McLaren Health Care - Oakland – MI
McMaster University – ON
Nassau University Medical Center – NY (3)*
Richmond University Medical Center – NY*
Tulane University – LA
University of Arizona at Tucson – AZ*
University of Cincinnati Medical Center – OH*
University of Minnesota – MN

*PGY-2 Placement